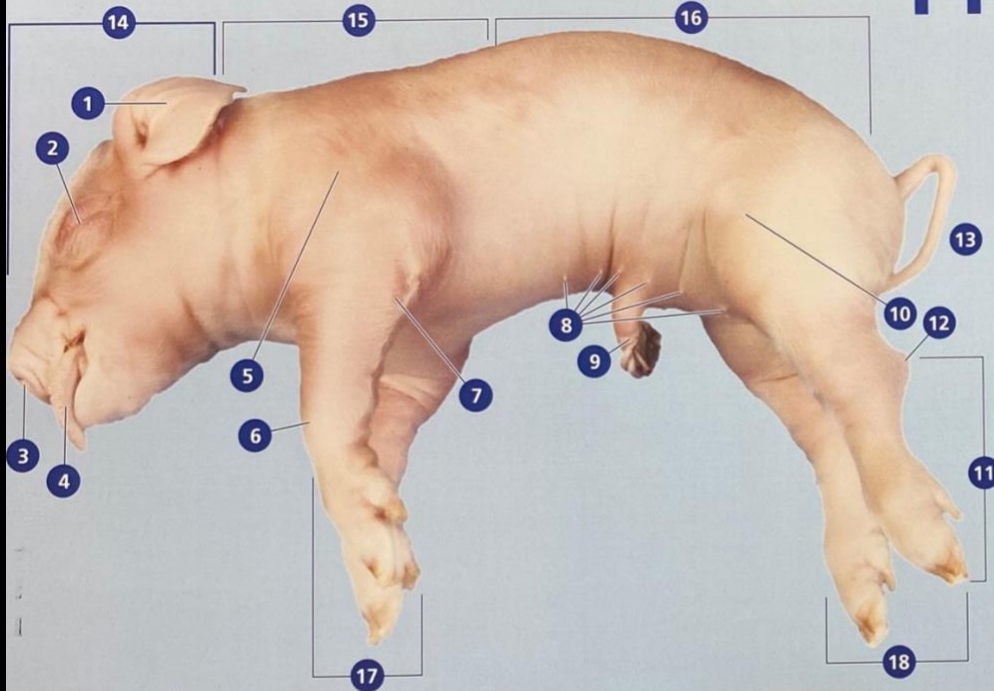
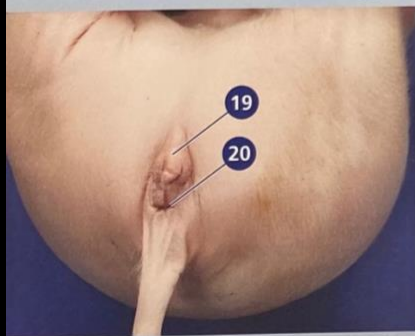


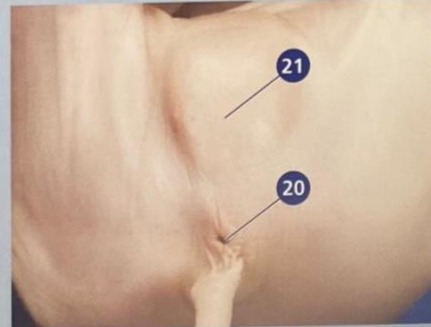
PIG



Position the pig securely, ventral side up. Make the incisions indicated by the dotted lines, beginning at the red dot. Cut through the skin, muscle, and underlying fat. Open the abdominal cavity.



Female



Male

Determine the sex of the specimen.

Make the incisions indicated by the dotted lines, beginning at the neck. Cut through the skin, muscle, and underlying fat. Use dissecting scissors to cut through the sternum and ribs. Open the thoracic cavity.



- 1 Pinna. External ear; channels sound waves into the ear canal.
- 2 Eye. Organ responsible for vision.
- 3 Nares. Nostrils; paired openings to the nasal cavity, for passage of inhaled and exhaled air.
- 4 Tongue. Muscular organ in the mouth that aids in manipulation of food.
- 5 Shoulder. Joint where the forelimbs attach to the body.
- 6 Wrist. Joint of attachment of the forefoot.
- 7 Elbow. Joint on the forelimb at the junction of the humerus and radius and ulna.
- 8 Teats. Paired mammary papillae (nipples).
- 9 Umbilical cord. Tissue that connects the fetus to the placenta.
- 10 Knee. Joint on the hind limb at the junction of the femur and the tibia and fibula.
- 11 Foot. Portion of the hind limb distal to the ankle or of the forelimb distal to the wrist.
- 12 Ankle. Joint of attachment of the hind foot.
- 13 Tail. Posterior appendage.
- 14 Head. Most anterior region; contains the brain, mouth, ears, and nose.
- 15 Thorax. Body region between the head and abdomen; contains the lungs and heart.
- 16 Abdomen. The more caudal of the two regions of the trunk; contains most of the reproductive and digestive organs.
- 17 Forelimbs. Anterior pair of legs.
- 18 Hind limbs. Posterior pair of legs.
- 19 Genital papilla. In female pigs, a fleshy flap that loosely covers the urogenital opening.
- 20 Anus. Terminal opening of the digestive system, through which digestive waste is eliminated.
- 21 Scrotum. Sac that holds the testes and epididymis outside the male's body cavity.

CAROLINA
www.carolina.com